



5th October

2018

Dear Home

As we enter into October could we draw your attention to the dates in the newsletter for up and coming events. It is a really busy term and there will be lot of exciting things going on.

A little reminder on uniform, as many of the children are looking extremely smart and its important this is recognised. Thank you for ensuring they come in and look fabulous. We really appreciate it. We are aware a few children are wearing trainers this is not our uniform expectation. Thank you.

Over the next few months you will see some outdoor changes taking place as we are really focused on making our school a great resource for our children. This will include a 'ALL WEATHER' running track on our field, which we are very excited about. We have been lucky enough to secure a grant to enable this and we know it will open up many opportunities in activity for our children and for others in our community. Please feel free to share this information with any clubs you know that would be interested in using this.

We are also working hard to review our playground facilities and ensure our children can be active at lunchtime, however we have had a few tumbles recently due to rough play. As a school we are working on this and would appreciate your support at home by reiterating the importance of safe play, being kind and looking after each other. Thank you.

Our value this half term is:



Have a fabulous weekend

The leadership Team

Letters out this month



Yr 6 Leavers Hoodie
Arthog Parents Meeting
Yr 4 Pioneer Trip Letter
Harvest Festival 2018



Maths & Reading Challenge Letters

Copies of our letters are available on the school website.

Reminder

The school office is **closed every Friday** from 9:30 - 2:30. The school answerphone will be checked regularly throughout the day in case of emergency.

Thank you .

DID YOU KNOW?...There is an Emergency SMS service and it is FREE!

This service allows you to use SMS (text messaging) to contact any of the UK 999 services (police, ambulance, fire & rescue or coastguard).

It's available for anyone who finds making a voice call difficult, has communication difficulties, is deaf and includes members of the autistic community.

To use the service, you need to pre-register your phone on the website.

Please see more at <http://www.emergencysms.org.uk/>

This may be useful to a great many people, including those who may want to make a 999 call without being seen to do so.

Absence

Please can we remind all parents/carers that if your child is going to be off school due to illness, you need to contact the school on 01743 875020 each day that they are off.

Please can we also request that any illness or medical appointments are advised to the office directly and messages are not left with breakfast club or teachers at the start of the day.

If you have an appointment, we ask where possible, that you provide the school with a copy of the appointment letter prior to the date and time of the appointment.

Thank you.



Admission dates for Ladybirds Nursery 2018-19

From September 2018 the enrolment dates for Ladybirds Nursery will now be at the beginning of each half term only.

Please see admission details below.

Group visits

A great opportunity for you and your child to meet the staff and explore our fantastic nursery environment!

Autumn 2nd half

18th October 2018 – 1-2pm
23rd October 2018 – 10-11am

Spring 1st half

18th December 2018 – 1-2pm
20th December 2018 – 10-11am

Spring 2nd half

12th February 2019 – 1-2pm
14th February 2019 – 10-11am

Summer 1st half

9th April 2019 – 1-2pm
11th April 2019 – 10-11am

Summer 2nd half

21st May 2019 – 1-2pm
23rd May 2019 – 10-11am

Start date

This is the date your child will officially start nursery



Autumn 2nd half

5th November 2018

Spring 1st half

7th January 2019

Spring 2nd half

25th February 2019

Summer 1st half

29th April 2019

Summer 2nd half

4th June 2019



If you would like any further information about Ladybirds Nursery then please contact Judith Hoy on 01743 875020

Parking

Due to the school receiving photos of cars/vans being parked inappropriately before and after school, we have contacted the local police who will now be monitoring the traffic and parking issues by placing extra patrols in the area.

Please ensure you read the road safety for schools leaflet included in the newsletter!



Harvest Festival

This year's Harvest Festival will be held at Christchurch on Wednesday 10th October at 2:00pm, everyone is welcome to attend. Please note children will be returning to school at the end of the service and are to be collected as normal at the end of the day, you will not be able to collect your child from the church.

As in previous years we are asking for donations to make up hampers which the School Councillors will deliver to the residents of Holland Close, and The Shrewsbury Food Bank. Donations of tinned goods and any non-perishable packet goods are to be taken to your child's class on the morning of our Harvest Festival.



We look forward to seeing you there!

The "Keep 'em Peeled" Code



Find a safe place to cross, then stop. Make sure you can see traffic in all directions!



Stand on the pavement near the kerb.



Look and listen for oncoming traffic.



Don't hurry. If traffic is coming, let it pass. Only cross when there is a gap in the traffic.



When there is no traffic near, walk straight across the road. Don't run.



Keep looking and listening for traffic while you cross. Walk straight across the road.



[@wmercipolice](https://twitter.com/wmercipolice)

[f west mercia police](https://www.facebook.com/westmerciampolice)

www.westmerciam.police.uk



West Mercia
POLICE

Safer Roads
Partnerships
IN WARWICKSHIRE AND WEST MERCIA

Road safety for schools



Advice for parents and pupils

Walking to school



Peeler's Tips

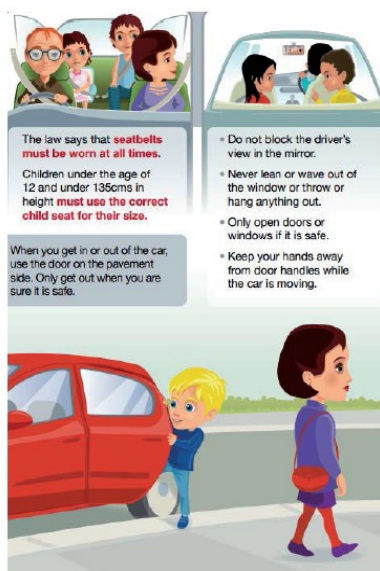
- Where there is a pavement or foot way, use it!
- If you are looking after someone younger than you, hold their hand when you cross the road.
- Wear bright fluorescent clothes on darker days and at night!
- When there is no pavement, walk on the right hand side of the road to face traffic coming towards you.

Crossing

Follow the "Keep 'Em Peeled" code and always use a Zebra or Pelican crossing if one is available.

If your school has a crossing patrol wait until they signal to you to cross the road. Always cross in front of them.

Getting a Lift



**KEEP 'EM PEELED with
PEELER the POLICE DOG!**

Parents

If you need to drive your child to school, for the safety of your child, their friends and the local community we request that you park safely, legally and considerately.

- "School Keep Clear" restrictions ensure clear sight lines for motorists & children. No vehicle, even blue badge holders, are permitted to stop.
- You should not park on the pavement or grass verge. Obstructing the verge or footway can amount to a criminal offence if the passage of pedestrians is significantly impeded.
- Consider parking further away from the school & walking the last 5 or 10 minutes. Walking to school is good for your health, means less congestion outside schools, improving air quality and safety around your school!



Taking holidays in term time

We would like to remind parents that taking holidays during term time unless under exceptional circumstances can result in a fine. For further information please follow this link to the Local Authority website: <http://www.shropshire.gov.uk/schools-and-education/school-attendance-or-exclusion/pupil-leave-of-absence>

As a school we are legally obliged to monitor attendance and any attendance that falls below 97% may trigger letters home and in some occasions you may be asked to come into school for a meeting. If attendance drops below the national expectation of 95% you may also be expected to meet with the Education Welfare Officer.

Arthog Trip Parents Meeting

We are holding an information meeting for parents in respect of the forthcoming Year 6 trip to Arthog. The meeting will be on Wednesday 17th October at 3.30pm in the school hall.

We will have some details of the activities the children will be taking part in, together with a list of the kit required. We will be able to answer any questions you may have about Arthog and the trip.

Year 6 Spelling Bee



We were lucky enough to be asked to take part in a spelling competition held at Meole Brace Secondary School last week.

Elizabeth Tozer represented Oakmeadow and was incredibly brave, competing against children from three other schools.

The spelling was of a very high standard from all participants and we are very proud to say Elizabeth was awarded 2nd place!

Well done Elizabeth and thank you for all your hard work!

Open Afternoon



Ladybirds Nursery



Oakmeadow Primary School
17 October 2018 2-3pm

Come along and join us for our official open afternoon.
A chance for you and your child to explore our fantastic new
and improved nursery environment and EYFS outdoor space.
Refreshments, cakes and biscuits for you to enjoy!
No need to book, just come along. We look forward to seeing you.

Reading Challenge Launch

We had a fantastic launch to our time travel reading challenge on Monday 24th September. Well done to everyone that dressed up, you all looked fantastic.

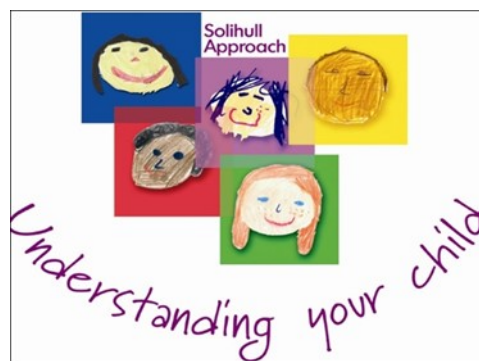
Get Reading!



Understanding Your Child *Coming soon...*

Wednesday evenings 6pm to 8pm

10-week course from 07/11/18 to 23/01/19



Would you like to join us?

Please ask for Miss Oliver or Mrs Severn for more details or pick up a leaflet at our reception desk.



Dates for your diary 2018/2019

October 2019

Wednesday 10th	Harvest Festival – 2:00pm @ Christchurch (Parents Welcome)
Wednesday 17th	Arthog Parents meeting in the school hall @ 3:30pm
Wednesday 17th	Nursery open afternoon @ 2:00pm
Monday 22 nd	Parents Evening
Wednesday 24 th	Parents Evening
Wednesday 24 th	Break up for half term!

November 2019

Monday 5 th	Back to School!
Monday 5 th	PTA Fireworks
Friday 9 th	Remembrance Day Service – Sea of poppies (Details to follow)
Monday 12th	YR 3&4 Parents Times Table information evening (Details to follow)
Monday 19 th	YR 6 Arthog Trip
Monday 19 th	EYFS Family Lunch
Monday 26 th	Open morning for new parents @ 10:00am
Thursday 29 th	Whole school panto trip

December 2019

Wednesday 5 th	Christmas jumper day
Friday 7 th	Winter Wonderland
Monday 10 th	EYFS Christmas Performance - PM
Tuesday 11 th	EYFS Christmas Performance – AM & KS1 Christmas Performance - PM
Wednesday 12th	KS1 Christmas Performance - AM
Thursday 13 th	EYFS Christmas Performance - PM
Friday 14 th	KS1 Christmas Performance - PM
Monday 17 th	Heads Afternoon Tea
Tuesday 18 th	YR 5&6 Christmas Performance @ Christchurch - PM
Wednesday 19 th	YR 5&6 Christmas Performance @ Christchurch - PM
Thursday 20 th	Christmas Party Day
Friday 21 st	Break up for Christmas!

Lost property

Brooke in yr 2 had lost a pink coat with pink fur around the hood.

If anyone has picked this up by mistake please return it to the school office.

Thank you.

Sports News

Under 11 champions



Congratulations to our under 11 football team who won the U11 Danone Nations 7 a-side trophy on Wednesday 3rd October, the boys will now be attending the ESFA Regional Finals, date and venue to be confirmed.

In the final we played a very good Oxon team, we were two well matched teams that ended 0-0 and went to penalties. With some great penalties and some equally good saves from both keepers we eventually won 7-6.

Well done boys you played great football all night and were well deserved champions.

Miss Turner.

Wow Moment!

Wow moment for Seb in Yr 5!



Seb was lucky enough to be a mascot for the football match between Man City v Lyon in the Champions League on Wednesday 19th September.

Well Done Seb!

Sonic Sports presents
Spooktacular Kids Halloween Club

30th - 1st November 2018.



HALLOWEEN AMBUSH MULTI SPORT

PUMPKIN CARVING

Our camps are managed and run by fully qualified Activity Professionals who work in schools. All the team hold enhanced DBS (CRB), child safeguarding and first aid providing you the parent/carer, the peace of mind that they are in the very best of



@Son-



07532724771



sonicsportsclub1@gmail.com

Please complete this form by ticking the days you would like your child to attend and return to the school office F.A.O Miss Turner along with your payment to book your place.

Your child will need indoor and outdoor clothing/footwear and a packed lunch.

	Tuesday 30th	Wednesday 31st	Thursday 1st
Normal (9—3.00pm)			



Payment made by di-

☐

rect transfer

☐

Cash enclosed

Name..... D.O.B.....

...../...../..... School Year.....

Address.....

..... Post Code.....

Email Address.....

Emergency Contact name..... 2. Emergency Contact name.....

Relationship..... Relationship.....

Contact Number..... Contact Number.....

Medical Requirements/Allergies and Any Other Information

Jump In! School Voucher Scheme

Bosses at a Shropshire trampoline park today launched a voucher scheme to give children the chance to win a free school trip.

Jump In Shrewsbury has launched its school scheme which will see bouncers collect a voucher to be handed in at their school or nursery. The class will be able to collect discount vouchers each time they attend a bounce session at the Henley Way venue and then the school can use them how they wish.

General manager Duncan Kemp said: "We know there are lots of national voucher schemes out there providing much-needed equipment for schools - but we believe giving children lots of experiences outside of the classroom is important in addition to everything they learn within school.

Carla Whelan, headteacher of Oakmeadow Primary School in Bayston Hill was the first school to join the scheme.

"This is a great idea as children love collecting vouchers and for them to be rewarded with a free trip once they have collected enough is fantastic."

"It is trips like these that create very special memories. We must remember not all children are fortunate enough to be able to visit such venues at the weekends or during holidays so those who are fortunate enough will be giving their friends and peers the chance to experience the same."

"We will be saving for an end of term trip or maybe some pre-Christmas visits if we collect enough by then and may use them as our reward scheme too."


To take part, ask reception staff for a voucher and hand it in at school. One voucher will be issued to any child or young person aged 18 or under booked on to a bounce session - only the birthday girl or boy will be able to collect a voucher when a party is booked.





SECOND-HAND UNIFORM SHOP

PRICE GUIDE

<u>Official School Logo Items</u>				<u>Plain School Uniform Items</u>	
Coats	£5			Lilac Summer Dresses	
Jumpers / Cardigans	£3			Daps / Shoes	
T-Shirts/PE (House) T-Shirts	£1			Skirts/Pinafores/Shorts /	
Book Bag /Rucksacks/PE Bags	£1			Trousers	
Baseball Caps	£1			P.E. Shorts /Leggings/T-Shirts	
				Hair Scrunches' /Socks/Tights	

Located Opposite The Main Meeting Room

**This Service Is Run Entirely By Volunteers
& All Donations Go To Oakmeadow PTA**

PLEASE HELP To Keep This Service Available By



1. Donating good clean uniform (in the box provided)
2. Paying for purchases at Reception
3. Keeping the cupboard tidy

Thanks For Your Support!

If you have any spare children's clothes hangers donations would be greatly appreciated. Please drop off at the main school reception. Thank you

Community News

Bayston Hill After School and Holiday Club

Harry Potter week will be returning this half term due to popular demand. With activities such as match the socks to free Dobby, escape Aragog, potions class, animagus, wand making and spell casting and duelling among many other Harry Potter related activities.

We welcome all young witches and wizards and muggles alike.

We open from 8.30 to 5.45 with other session times available.

Contact Tara Thomas on 07979522197 for more details.



SHROPSHIRE DYSLEXIA ASSOCIATION

SUPPORTED BY SCANNING PENS (WWW.SCANNINGPENS.COM)

FREE Information/support event for children and adults with Specific Learning Difficulties.

Come along for an informal chat:

Information from:
Specialist Teachers
Specialist Assessors

Our workshop leaders who teach pupils with specific learning difficulties.

Demonstrations will include: specialist computer programs and assistive technology available to support both children and adults.

APPS that are available.

Assessment materials for assessors and SENDCO's.

Professional agencies who will be there to answer any of your questions and to give support and advice:

- AUTISM WEST MIDLANDS
- PACC – Shropshire Parent and Carer Council
- Scanning Pens

SATURDAY 10th November 2018

Belle Vue Methodist Church
Bellevue Road, Shrewsbury SY3 7NL

Time: 2.00 p.m. to 4.00pm

Workshop by Scanning Pens at 3.00 p.m.

Light refreshments available
(DONATIONS TO SUPPORT OUR CHARITABLE WORK)

Suitable for: Parents, pupils, students, adults with specific difficulties, teachers, anyone who works in or has an interest in Special Educational Needs.



Charity No: 513065



SHREWSBURY UP & COMERS FOOTBALL CLUB

Recruiting New Players Now

Up & Comers Eagles (U11 Girls)

Recruiting Year 5/6 girls for 2018/19 season

Training sessions on Fridays 6pm -7pm (SCAT)

Contact details below for further details or informal chat

Chris French 07980 756 346

Email: frenchc29@gmail.com



Visit us on Facebook



Passmaster Coaching Shrewsbury



DANCE CLASSES

AT LEEBOTWOOD VILLAGE HALL

EVERY TUESDAY

- * Boys "Ignite" (all ages)
- * Street Dance (11 yrs +)

***For more information, times & prices, contact:
Catherine Griffiths (FISTD DDE Montessori DIP)***

Tel: (01743) 622 446 Mob: 07570 966006

Email: cathymgriffiths@gmail.com

www.dianagriffithsschoolofdance.co.uk



Parenting Team Understanding Your Child Clinics

Autumn Term 2018

Day of week	Monday	Tuesday	Wednesday	Thursday	Friday
Location	OSWESTRY	WHITCHURCH	SHREWSBURY	SHREWSBURY	MARKET DRAYTON
Address	The Centre	Civic Centre	Crowmoor Childrens Centre	Richmond House	Raven House
Times	12.30 – 16.30 Bi-Weekly	10.00 – 13.00 Bi-Weekly	12.30 – 16.30 Weekly	09.00 – 12.00 Weekly	09.00 – 13.00 Weekly
Location	ELLESMERE	WEM			
Address	Town Hall	Edinburgh House			
Times	13.00 – 17.00 Bi-Weekly	09.00 – 13.00 Bi-Weekly			
Location	LUDLOW	CHURCH STRETTON			
Address	Rockspring Centre	The Mayfair Centre			
Times	12.00 – 16.00 Bi-Weekly	09.00 – 12.00 Bi-Weekly			
Location	CRAVEN ARMS	BISHOPS CASTLE			
Address	The Gateway	Children's Centre			
Times	12.00 – 16.00 Bi-Weekly	09.00 – 12.00 Bi-Weekly			
Location		BRIDGNORTH			
Address		The Library			
Times		12.30 – 16.30 Bi-Weekly			
Location		SHIFNAL			
Address		The Old Fire Station			
Times		12.00 – 16.00 Bi-Weekly			

Appointments are for 45 minutes, and the clinics run either weekly or Bi-weekly

All bookings via Parenting Team: parenting.team@shropshire.gov.uk or Telephone 01743 250950

SEND YOUR DONATION IN ANY BAG

As a recycling company we can no longer justify the manufacture of plastic bags to enable the recycling of your textiles as they are having a catastrophic effect on our planet.



So use a supermarket carrier bag, bin liner or shop bag, to bring your clothes to school.



Funds raised through textile recycling help you and The Fire Fighters Charity.

Recycling clothes for re-wear removes them from landfill, helping the environment to make a better future for us all.



The Fire Fighters
Charity

Actively supporting fire fighters in need whether injured, ill or in need of psychological support to come to terms with the life and death situations they face on a daily basis, we support the everyday heroes of the UK fire community.

You have arranged this collection with Beaumonts Recycling to help with fundraising.

We will pay your School £300 per tonne (30p per kilo) for Good Quality Second Hand Clothing that can be re-used - No Bric-a-Brac please. (We also pay The Fire Fighters Charity £80 per tonne.)

Beaumonts Recycling

Tan W Beaumont Limited, 14 Melford Rd E1, Charles Street, Haringey, W4 5PD
Tel: 01924-274718 Email: info@beaumonts-recycling.co.uk www.beaumonts-recycling.co.uk
Tan W Beaumont Limited working in partnership with The Firefighters Charity. CRM 1040387